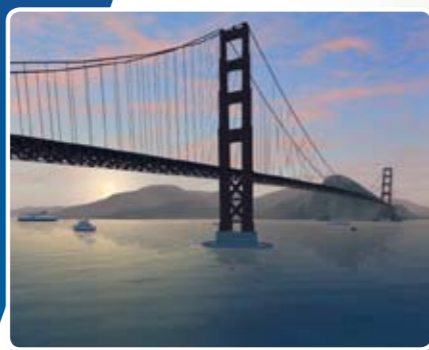
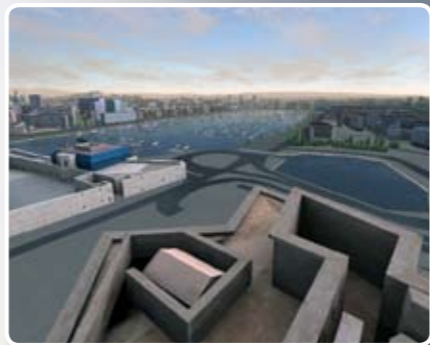


Ship Simulator 2008



Ship Simulator 2008

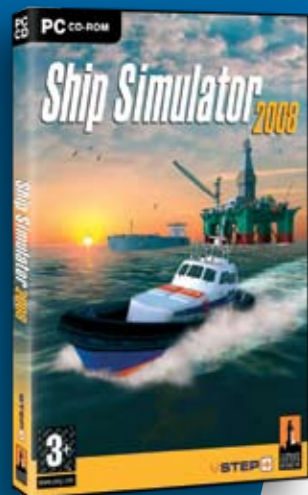
The world's best Maritime Simulator just got even better!

▶ ABOUT THE CREATORS OF SHIP SIMULATOR 2008

VSTEP develops professional simulators for fire-fighters, driver training and nautical training. Since its initiation in 2002, VSTEP has completed 26 training simulators for customers like the Royal Dutch Navy, the Port of Rotterdam, Falck/Nutec, the Dutch Railways, and DriveZone. VSTEP's experience and core technology from these projects has been adapted to deliver a "true to their roots" simulator for the home PC user.

▶ MINIMUM SYSTEM REQUIREMENTS:

- ▶ Windows XP or Vista
- ▶ 2.4 Ghz Intel® Pentium® IV or AMD® Athlon™ processor
- ▶ 1 -GB RAM (Windows XP), 2GB (Vista)
- ▶ 4x CD-ROM/DVD-ROM drive
- ▶ Approx. 500 MB free hard disk space
- ▶ 256 MB video card supporting shaders 2.0a (Nvidia GeForce 5900, ATI X700 or comparable)
- ▶ Mouse with scroll wheel



GS1: 8717.66.227.0499



Ship Simulator 2008 © Lighthouse Interactive Game Publishing BV 2006. All rights reserved. Developed by VSTEP. Published by Lighthouse Interactive Game Publishing BV. The V-Step logo and the Lighthouse Interactive logo are registered trade marks. All other trade marks are properties of the respective owners.

Release: July 2007

Ship Simulator 2008

Genre: Simulation Platform: PC Release date: July 2007 SRP: £34.99

Ship Simulator 2008, the much anticipated sequel to the surprise simulation hit of last year, has now become even better. New harbours are added, and many new ships, but also much desired features like open sea missions, advanced weather conditions, and realistic waves. Ship Simulator 2008 will rock your simulated World!



Features



Ocean waves, with realistic ship motion



Advanced day, night and weather systems



Visible damage on ships after a collision



Long-distances trips between harbours (open sea missions)



Walkthrough options on all new ships



Mid-mission save function



New navigation instruments, including a depth meter



Advanced towing and mooring rope operations



Complex and challenging missions, including ship chases, container loading and exciting rescue operations



Advanced navigation charts based on 3D seabed models, with zoom and full-screen options



Seven sailing areas, of which three are brand new: Southampton/Solent including Cowes, San Francisco and Marseille



Thirteen vessels, of which nine are new, including ferries, a supertanker and a massive container ship



Controllable crane for loading and unloading containers on ships



Free-roam option: choose an environment, a ship, set the weather conditions, and get sailing

Some of the new vessels are:



FAIRLIFTER

Operator: Fairmount
Type of ship: Heavy lift vessel
Length: 146m
Width: 36m

Tonnage, unloaded: 19300
Tonnage, loaded: 29400
Engines, HP: 15442
Speed (Knots): 12 knots



FREEDOM90

Operator: Hovertravel
Type of ship: Hovercraft
Length: 21.5m
Width: 10m

Tonnage, unloaded: 39
Engines, HP: 2100
Bow thruster: Yes
Stern thruster: Kinda



PRIDE OF ROTTERDAM

Operator: P&O
Type of ship: Ferry
Length: 215 m
Width: 31.88 m
Tonnage, unloaded: 19176

Tonnage, loaded: 22994
Engines, HP: 50670
Bow thruster: Yes
Speed (Knots): 22 knots



REDEAGLE

Operator: Red Funnel
Type of ship: Ferry
Length: 93.2m

Width: 17.5m
Speed (Knots): 14 knots



REDJET4

Operator: Red Funnel
Type of ship: Fast ferry
Length: 39.8
Width: 10.8 m
Tonnage, unloaded: 91,7

Tonnage, loaded: 121
Engines, HP: 4692
Speed (Knots): 41 knots
unloaded, 38 knots loaded



ARIE VISSER

Operator: KNRM
Type of ship: Rescue boat
Length: 18.8m
Width: 6.1m

Tonnage, unloaded: 28
Engines, HP: 2x1000HP
Speed (Knots): 32 kn



RPA12

Operator: Port of Rotterdam
Type of ship: Incident Vessel
Length: 29m
Width: 8.2m

Tonnage, unloaded: 52
Engines, HP: 1318
Speed (Knots): 12.5knots